

How to Produce Press-Ready Grayscale PDFs from TopLeaf

Overview

Grayscale PDFs produced from TopLeaf may lose transparency information in images. And, the encoded colorspace may still be set to RGB, even though Grayscale is selected in the TopLeaf PDF profile.

In order to maintain transparency information in grayscale PDFs, and get the best possible press results, TopLeaf PDFs **must** be produced with the "color" option turned on, even though there are no colors used in the documents, and then post-processed to convert the colorspace to grayscale.

The TopLeaf profile you select **must** have the Color option set to "rgb" (there are only two choices: rgb, and grayscale). **This is the default profile setting.** Other profile options (such as bookmarks and links) can be disregarded, because the final press-ready PDF will have these removed. (The profile options also allow setting "always embed fonts"; this is not the default, but should be set.)

Step-by-Step

The following procedure works with **Acrobat Professional** version 7 or higher. In Acrobat 8 or 9, you may have additional conversion methods available (under the "Tools->Print Production" menu).

- 1) Generate the PDFs through TopLeaf as you normally would, selecting a TopLeaf PDF profile that has RGB color enabled.
- 2) Using Adobe Acrobat -- not Reader -- open one of the PDFs.
- 3) From the File menu, choose Print. Select the "Adobe PDF" printer - you are printing a PDF to a PDF. The print options menu is displayed:

Print

Printer: **Adobe PDF** Properties

Status: Ready
Type: Adobe PDF Converter

Comments and Forms: **Document and Stamps**

Print Range

All
 Current view
 Current page
 Pages from: 1 to: 700
 Subset: All pages in range Reverse pages

Page Handling

Copies: 1 Collate
 Page Scaling: **Fit to Printer Margins**
 Auto-Rotate and Center
 Choose Paper Source by PDF page size

Print to file
 Print color as black

Printing Tips Advanced

Preview

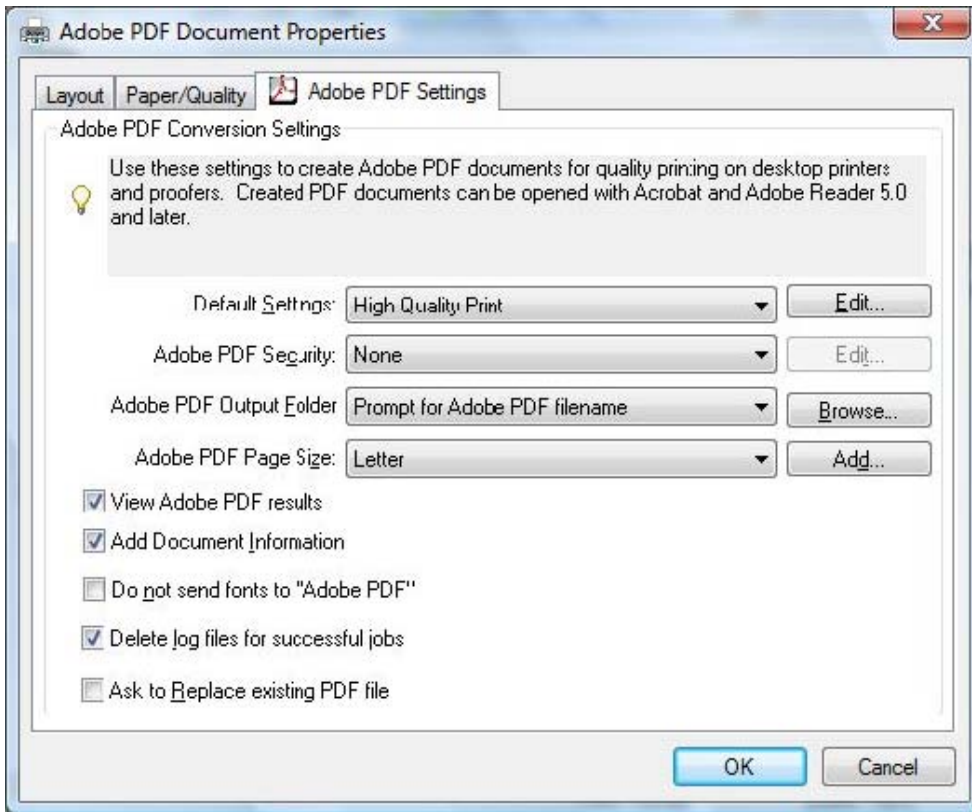
6
8.25

Units: Inches Zoom: 100%

1/700 (1)

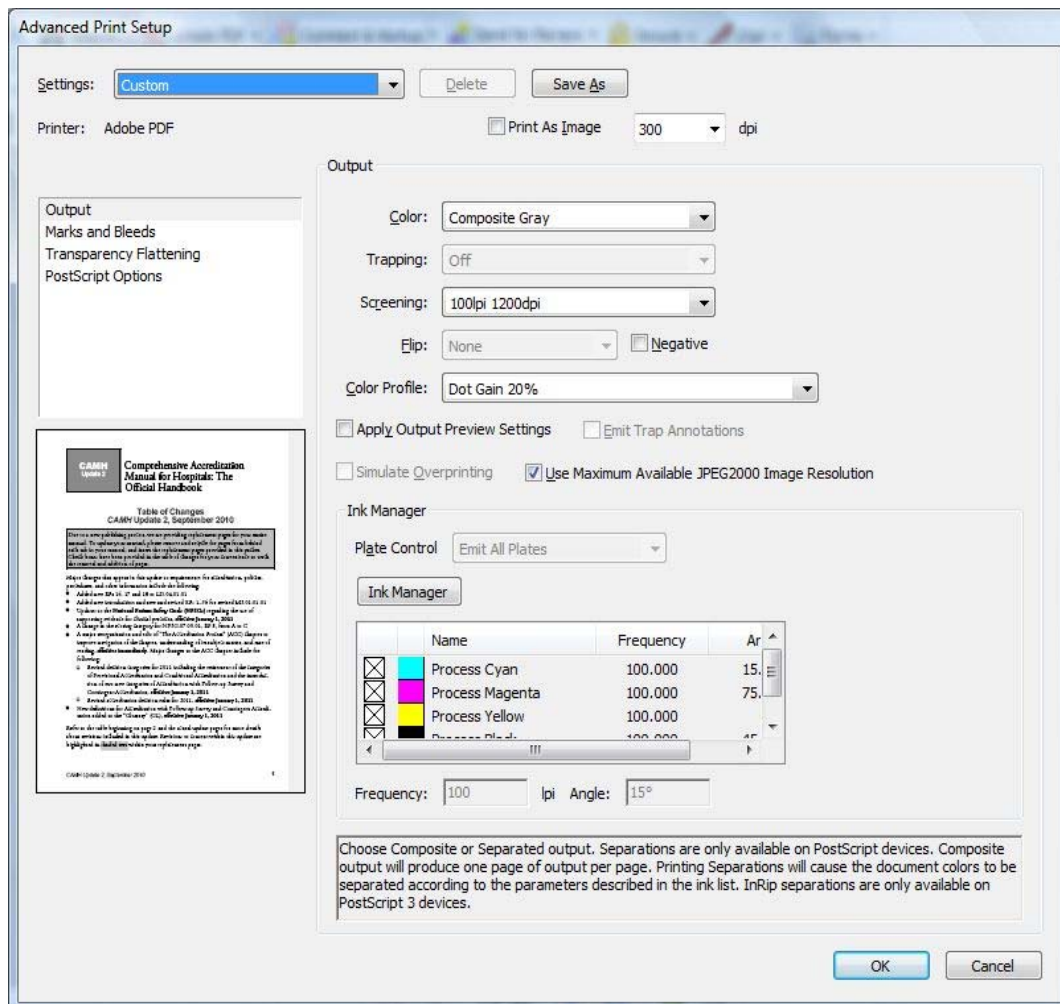
OK Cancel

4) Click the "Properties" button. The Adobe PDF Document Properties dialog opens:



5) Set the "Default Settings" option to "High Quality Print". The other options (including the "Do not send fonts to "Adobe PDF") can be ignored.

6) Click OK. On the Print dialog, click the "Advanced" button at the bottom of the dialog. The "Advanced Print Setup" dialog opens:



7) In the left pane, select the "Output" option from the list (options are Output, Marks and Bleeds, Transparency Flattening, and PostScript Options). In the "Output" field to the right, set "Color" to "Composite Gray". The screening option should be left at the default, unless your printer indicates otherwise. Set the "Color Profile" option to a gray option such as "Gray Gamma 1.8", "Gray Gamma 2.2", or "sGray".

8) Click "OK". The options remain set for your entire Acrobat session, so after doing it the first time, you do not have to change it again for the other PDFs, unless you restart Acrobat.

9) On the "Print" dialog, set the "Page Scaling" option to "Fit to Printer Margins". Set the "Choose Paper Source by PDF page size" option to checked (selected).

Now you're ready to print. Click "OK". Acrobat prompts for a file name. Choose a save location and file name different from the original.

The process may appear to stall several times as the PDF is processed. Be patient.